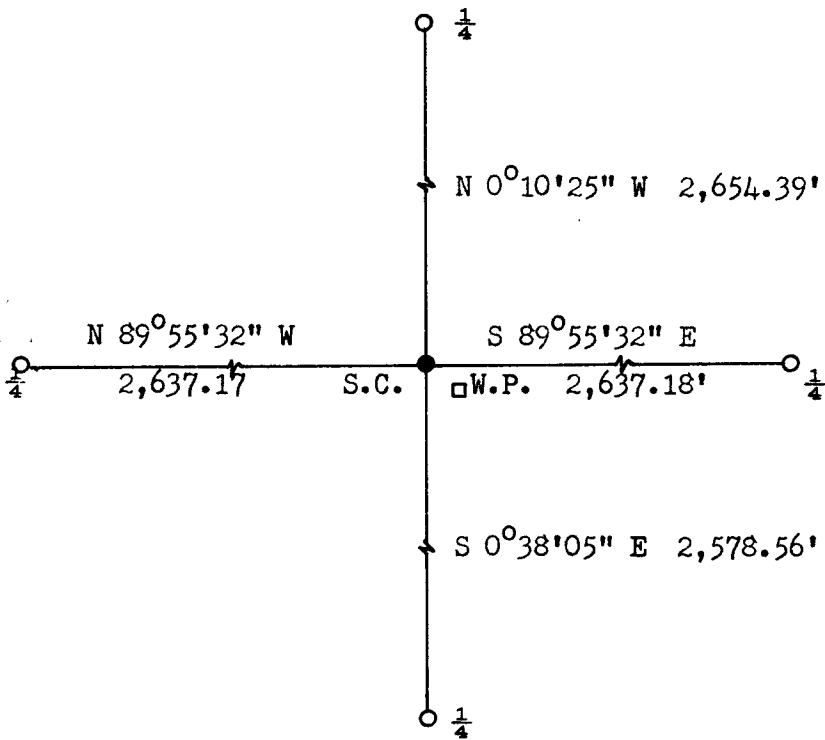


**CERTIFIED LAND CORNER RECORDATION**

<p>LOCATION</p> <p>S.32 S.33 S. 5 S. 4</p> <p>T.15N.,R.69W. T.14N.,R.69W. 6th P.M.</p>	<p>DESCRIPTION OF CORNER EVIDENCE FOUND, AND ORIGINAL RECORD (If known)</p> <p>Found granite stone with grooves, lying on top of ground.</p> <p>Corner re-established by single proportionate measurement.</p> <p>G.L.O. record - Granite boulder, 16 x 9 x 9.</p>
--	--

<p>DESCRIPTION OF MONUMENT AND ACCESSORIES ESTABLISHED TO PERPETUATE THE ORIGINAL LOCATION OF THIS CORNER:</p>	
<p>At the corner:</p> <p>Accessories:</p>	<p>Set a 1½" dia. x 30" long iron pipe with brass cap.</p> <p>A 4" x 4" Redwood post, 4' long 18" in the ground bears SE'ly, 3 feet.</p>

SKETCH, WITH COURSE AND DISTANCE TO ADJACENT CORNER IF DETERMINED IN THIS SURVEY.  
(May Sketch or Paste Reproduction on Reverse Side.)



Not to scale

Brass cap set 6" above ground.

Brass cap stamped:

T.15N. R.69W.  
S.C.  
S.32 S.33  
S. 5 S. 4  
T.14N.

LS 519 1972

I, R.L. Hudson certify that I have carefully performed ~~or reviewed~~ the work done on the diagrammed corner as reported on this recordation form and approve the same.

R.L. Hudson  
Signature of Surveyor

Wyoming L.S. No. 519  
Registration No.

STATE OF WYOMING,  
Office of Clerk and Recorder,  
County of Laramie

This "corner record" was filed for record on the 30th day of October, 1972, was noted on the cross-index plat and is assigned page No. 15-69, in book No. ONE.

Jolly B. Williams  
County Official

Cross Index No. <u>14N</u>	T. <u>69W</u>	R. <u>6th</u>	Mer.
_____	T. _____	R. _____	Mer.
_____	T. _____	R. _____	Mer.
_____	T. _____	R. _____	Mer.
_____	T. _____	R. _____	Mer.
_____	T. _____	R. _____	Mer.
_____	T. _____	R. _____	Mer.

The State of Wyoming }  
County of Laramie } SS

This instrument was filed for record  
at 2:06 o'clock P. M. on the  
20th day of October  
A. D. 19 22 and duly recorded in  
Book ..... on page .....



County Clerk & Ex-Officio Register of Deeds.  
Depuys .....